

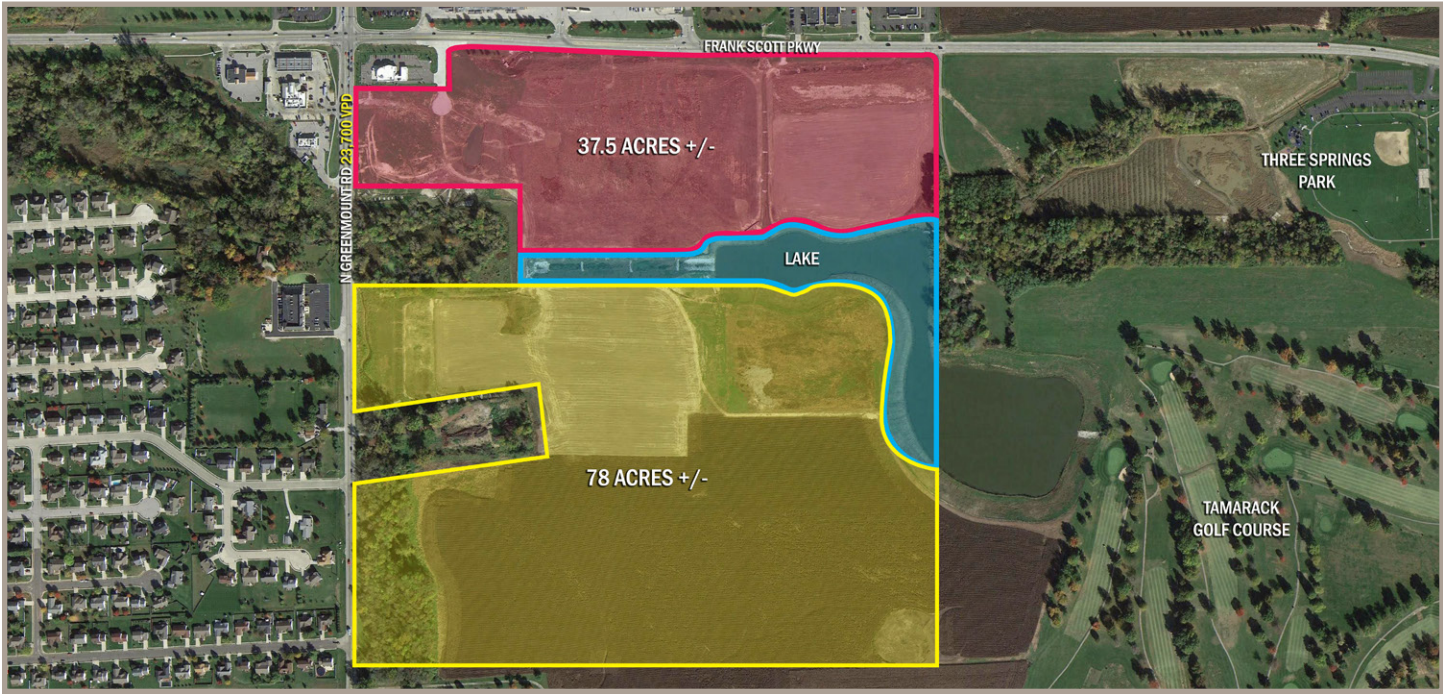


**Pace Properties**  
1401 South Brentwood Boulevard  
Suite 900  
St. Louis, Missouri 63144  
(P) 314.968.9898  
(F) 314.968.5050  
www.paceproperties.com



**Pace Properties**  
1401 South Brentwood Boulevard  
Suite 900  
St. Louis, Missouri 63144  
(P) 314.968.9898  
(F) 314.968.5050  
www.paceproperties.com

NATURAL LAND DIVISIONS - EASTERN SITES



GREENMOUNT ROAD & FRANK SCOTT PARKWAY  
Shiloh, Illinois 62269

**FOR SALE:**  
Rick Randall, rrandall@paceproperties.com



WESTERN SITES



The information contained herein is not warranted, although it has been obtained from the owner/landlord of the subject property or from other sources that Pace Properties, Inc. deems reliable, and is subject to change without notice. Owner/landlord and Pace Properties, Inc. make no representations as to the environmental condition of the subject property and recommend tenant's independent investigation.

A MEMBER OF  
**CHAINLINKS**  
RETAIL ADVISORS



SHILOH, ILLINOIS AERIAL



About Shiloh:

The Village of Shiloh is a community of 13,000 residents approximately 20 miles east of St. Louis, MO. The Village is home to Yorktown Golf Course, a par 3, 18 hole, lighted course and Tamarack Golf Club, a 100 year old 18 hole, championship course. Memorial Hospital East, a new 94-bed full service, state of the art, hospital with 700 employees is scheduled to open in April, 2016. Immediately east of the Village is Scott Air Force Base, which is home to as many as 13,000 military and civilian employees. The Village has a diversity of housing, a very strong educational system, significant recreational open space for all ages, and a solid infrastructure system. The Village's location and easy access to local amenities and downtown St. Louis, make it the "place to be".

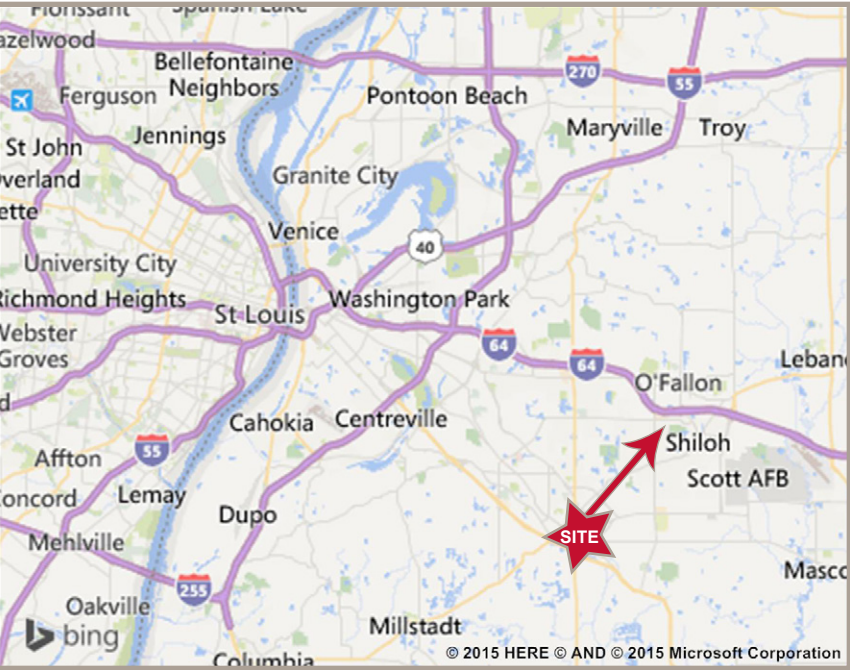
Sites at Greenmount Road & Frank Scott Parkway offer:

- Location in a high growth area
- Regional trade area
- Two new hospitals currently under construction nearby
- Growing retail market
- Signalized intersections
- Mixed-use potential

Land Sites Available:

1 - 133 Acres

2012 Demographics	1-Mile	3-Mile	5-Mile
Population	5,228	46,577	101,287
Average Income	\$86,686	\$79,269	\$72,543
Employees	2,872	17,206	41,949



AREA RETAILERS INCLUDE:

