



AGENDA

Village Board of Trustees Committee at Large Meeting

Monday, September 28, 2020 – 7:00 pm
Shiloh Municipal Building, 1 Park Drive

Remote Option: Zoom Meeting: Meeting ID: 276 145 0177. Password: 986271

CALL TO ORDER

PLEDGE OF ALLEGIANCE

PUBLIC COMMENTS ** **ANNOUNCEMENTS

MINUTES – AUGUST 24, 2020

TREASURER’S REPORT

MAYOR’S REPORT

1. ACKNOWLEDGEMENT TIF A & B
ENDING IN 2021 – NO PLANS TO
EXTEND

COMMITTEE REPORTS: **ADMINISTRATION & PERSONNEL** **(WEILMUNSTER)**

FINANCE & BUDGET (WRZEK)

PLANNING & DEVELOPMENT **(BURRELSMAN)**

1. REVISED PRELIMINARY PLAT &
CONSTRUCTION PLANS –
AUFFENBERG AUTO MALL

PUBLIC PARKS & FACILITIES **(WARCHOL)**

1. YORKTOWN – USED 2020
CARRYALL - \$8,500.00
2. KLUCKER HALL RENOVATIONS

PUBLIC SAFETY (O’NEIL)

STREETS (POWERS)

OTHER BUSINESS

1. EXECUTIVE (CLOSED) SESSION
(65 ILCS – SECTION 2)
(MAY BE HELD TO DISCUSS
PERSONNEL MATTERS (C) 1,
COLLECTIVE BARGAINING (C) 2,
PURCHASE OR LEASE OF REAL
ESTATE (C) 5, SALE OR LEASE OF
REAL ESTATE (C) 6, LITIGATION
(C) 11, AND DISCUSSION OF
CLOSED SESSION MINUTES (C) 21
2. ACTION TAKEN ON EXECUTIVE
SESSION ITEMS (IF ANY)

BILLS

ADJOURNMENT

BATTERY Specialists + GOLF CARS

800 Springfield Rd.
Taylorville, IL 62568

1018 South 10th
Mt. Vernon, IL 62554

133 W Kenyon Rd
Champaign, IL 61820

3641 George St.
Highland, IL 62249

USED 2020 CLUB CAR CARRYALL 500 EFI PICKER PURCHASE PROPOSAL FOR:

Yorktown GC
300 Caballeros Blvd Belleville IL 62221 618-233-2000

Standard Equipment		Colors	Additional Equipment	
Kohler EFI Engine	Cargo Box	Green body		
Picker Bracket	Canopy Top	Gray seats		
Premium Tires				

Golf Cars Proposed				
Quantity	Year	Description	Cost per	Cost
1	2020	Club Car CA 500 Picker		\$8,500.00
				\$0.00
				\$0.00
				\$0.00
				\$0.00
				\$0.00

Car Cost	\$8,500.00
Trade Value	\$0.00
Sales tax	\$0.00
Delivery	FREE
Total	\$8,500.00

Trade Proposals				
Quantity	Year	Description	Value per	Value
				\$0.00
				\$0.00
				\$0.00
				\$0.00
				\$0.00

Special Notes

Terms **Payment Due On Delivery**

- *All trades and chargers
- *Quotes are good for 30 d
- *Service Plan Attached

Yorktown GC

Accepted by _____

Title _____

Date _____

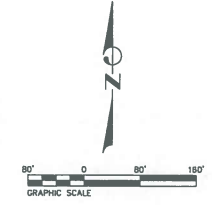
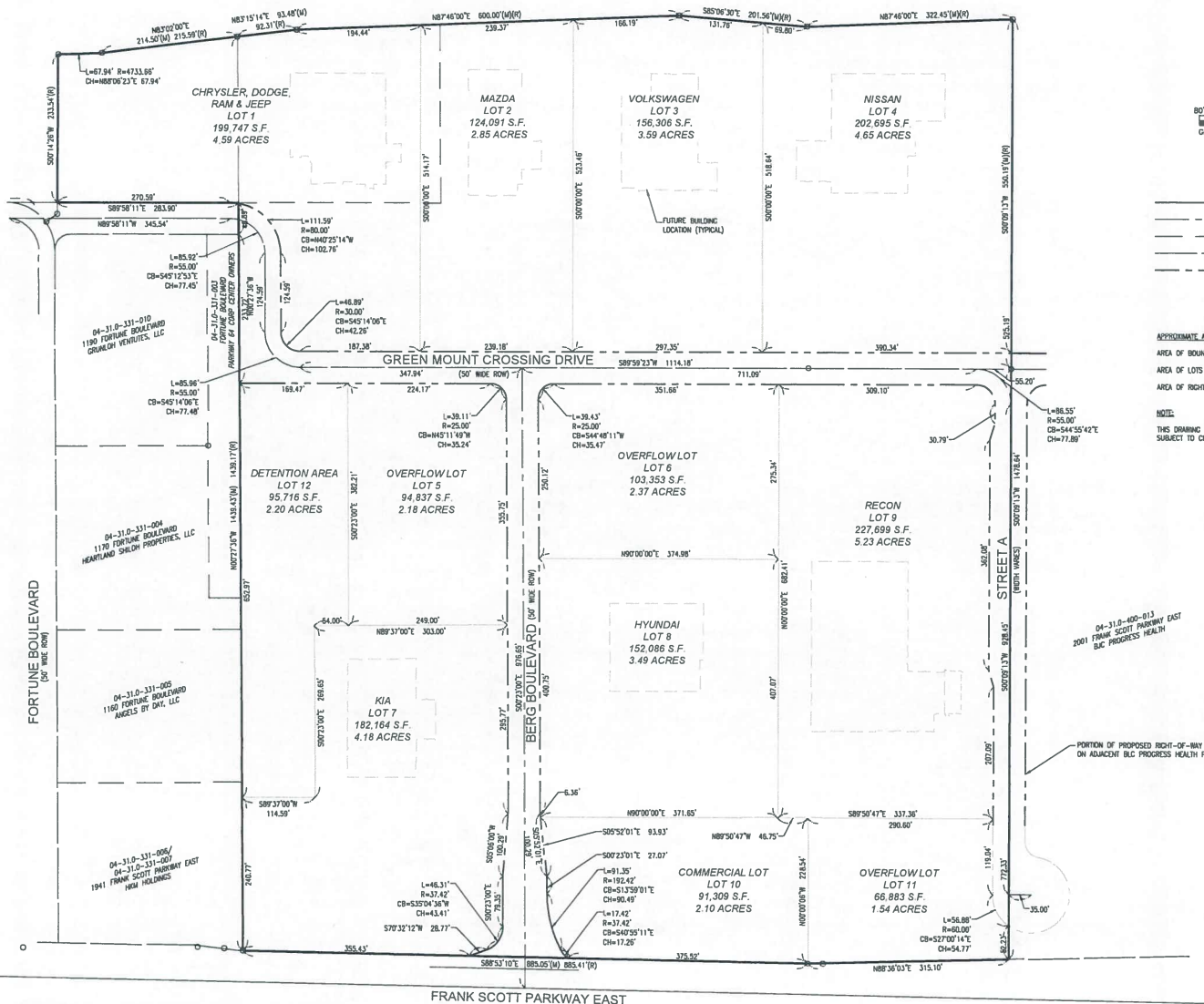


Picture is sample

Official **Club Car** Distributor

618-654-2742

INTERSTATE 64



LINE/TYPE LEGEND

- BOUNDARY LINE
- CENTER LINE
- LOT LINE - EXISTING
- RIGHT OF WAY LINE - EXISTING
- RIGHT OF WAY LINE - PROPOSED

APPROXIMATE AREAS AS SHOWN

AREA OF BOUNDARY = 1,845,183 S.F. 42.38 ACRES
 AREA OF LOTS = 1,686,860 S.F. 38.95 ACRES
 AREA OF RIGHT OF WAY = 149,323 S.F. 3.43 ACRES

NOTE:
THIS DRAWING IS NOT A FINAL PLAN. ALL INFORMATION SHOWN IS SUBJECT TO CHANGE.

TWM
CONSULTING ENGINEERING
GEOSPATIAL SERVICES

ILLINOIS SWANSEA WATERLOO EDWARDSVILLE PEORIA
 MISSOURI ST. CHARLES ST. LOUIS
 TENNESSEE NASHVILLE

THOUVENOT, WADE & MOERCHEN, INC.
 SWANSEA OFFICE
 4840 OLD COLLINSVILLE ROAD
 SWANSEA, ILLINOIS 62226
 (618) 624-4488
 WWW.TWM-INC.COM

PROF. LICENSE NUMBER

IL. PROF. DESIGN FIRM	184-001220
IL. PROF. ENGR. CORP.	62-033570
IL. PROF. ETR. ENGR. CORP.	81-002902
IL. PROF. LAND SURV. CORP.	048-000023
MO. PROF. ENGR. CORP.	001528
MO. LAND SURVEYING CORP.	000346
TN. PROF. ENGR. FIRM	8714

SEAL

SIGNATURE:
 DATE SIGNED:
 LICENSE EXPIRATION:

ISSUED FOR REVIEW / BID
 09/04/2020

REV.	DATE	DESCRIPTION
△		
△		
△		
△		

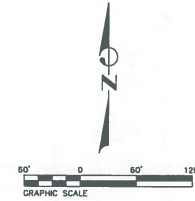
DRAWN BY: DAB
 DESIGNED BY: MJM
 APPROVED BY: MJM
 PROJECT NO: D01190320A

PROJECT:
 AUFFENBERG AUTOMALL
 VILLAGE OF SHILOH
 ST. CLAIR COUNTY
 ILLINOIS

TITLE
 SITE PLAN
 OVERALL

LINE TYPE LEGEND

---	BOUNDARY LINE
---	CENTER LINE
---	EASEMENT LINE
---	LOT LINE - EXISTING
---	RIGHT OF WAY LINE - EXISTING
---	RIGHT OF WAY LINE - PROPOSED



TWM
 CONSULTING ENGINEERING
 GEOSPATIAL SERVICES

ILLINOIS | SWANSEA
 WATERLOO
 EDWARDSVILLE
 PEORIA

MISSOURI | ST. CHARLES
 ST. LOUIS

TENNESSEE | NASHVILLE

THOUVENOT, WADE & MOERCHEN, INC.

SWANSEA OFFICE
 4940 OLD COLLINSVILLE ROAD
 SWANSEA, ILLINOIS
 62226
 (618) 624-4488
 WWW.TWM-INC.COM

PROF. LICENSE	NUMBER
IL. PROF. DESIGN FIRM	184-011210
IL. PROF. ENGR. CORP.	62-033570
IL. PROF. SURV. ENGR. CORP.	81-002523
IL. PROF. LAND SURV. CORP.	048-000029
MO. PROF. ENGR. CORP.	001529
MO. LAND SURVEYING CORP.	000346
TN. PROF. ENGR. FIRM	8374

SEAL

SIGNATURE:
 DATE SIGNED
 LICENSE EXPIRATION

ISSUED FOR REVIEW / BID
 09/04/2020

REV.	DATE	DESCRIPTION
△		
△		
△		
△		

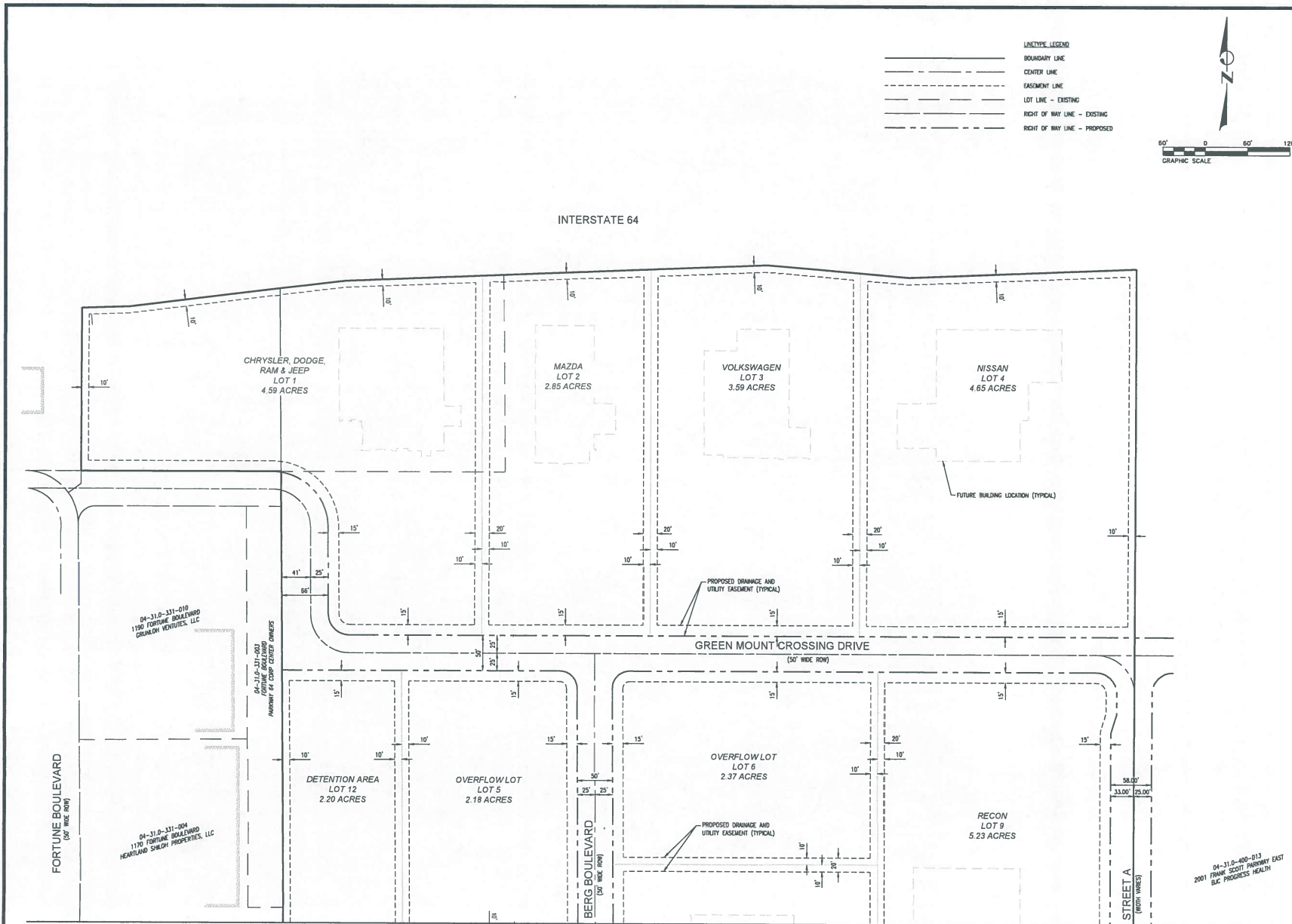
DRAWN BY: DAB
 DESIGNED BY: MJM
 CHECKED BY: MJM
 APPROVED BY: MJM
 PROJECT NO: D01190320A

PROJECT

AUFFENBERG AUTOMALL
 VILLAGE OF SHILOH
 ST. CLAIR COUNTY
 ILLINOIS

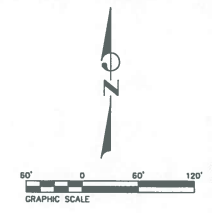
TITLE

SITE PLAN
 NORTH



SEE SHEET 8 - SOUTH SITE PLAN

- LINE TYPE LEGEND**
- BOUNDARY LINE
 - CENTER LINE
 - EASEMENT LINE
 - LOT LINE - EXISTING
 - RIGHT OF WAY LINE - EXISTING
 - RIGHT OF WAY LINE - PROPOSED



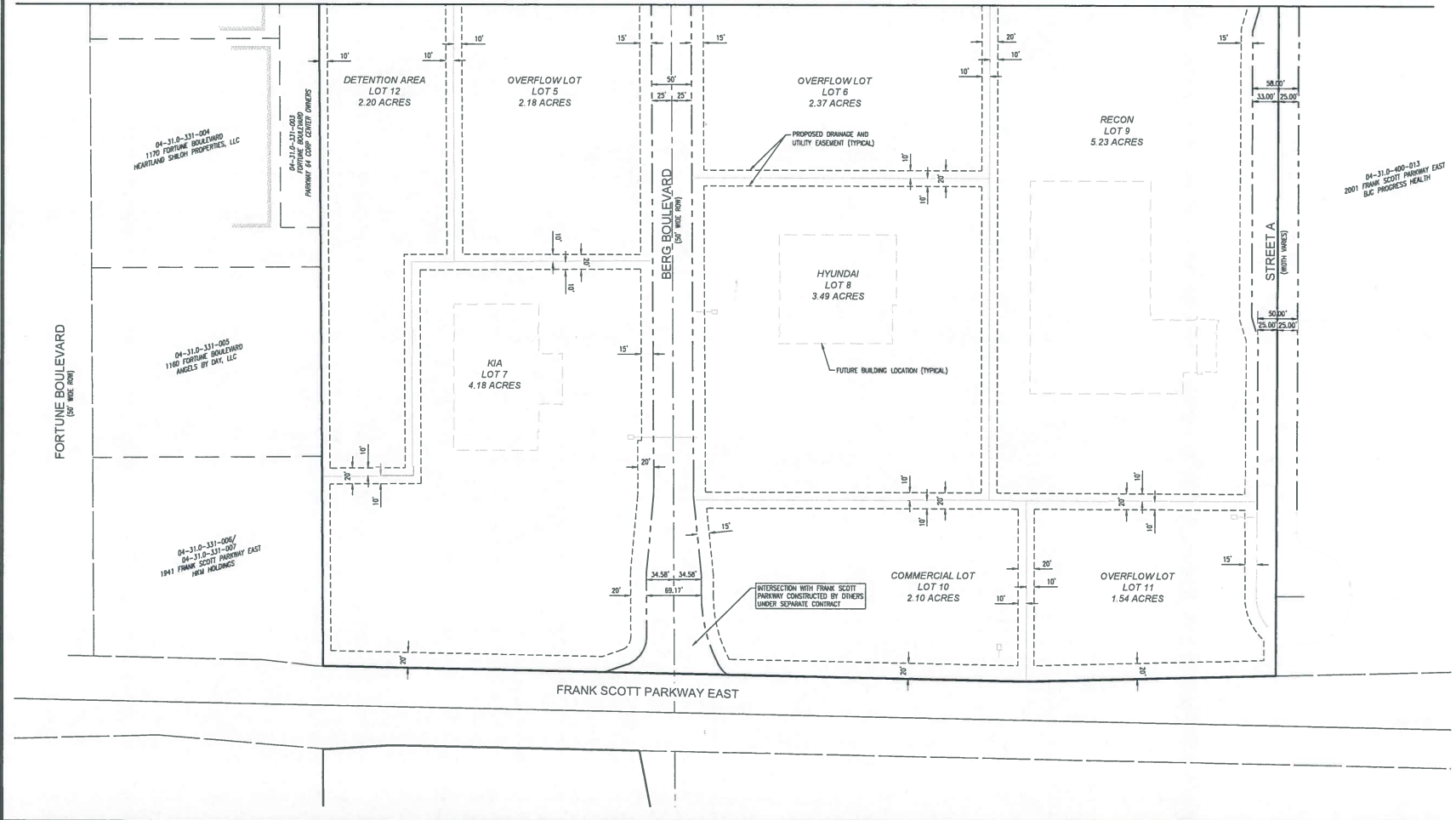
TWM
**CONSULTING ENGINEERING
 GEOSPATIAL SERVICES**

ILLINOIS | SWANSEA
 WATERLOO
 EDWARDSVILLE
 PEORIA

MISSOURI | ST. CHARLES
 ST. LOUIS

TENNESSEE | NASHVILLE

SEE SHEET 7 - NORTH SITE PLAN



**THOUVENOT, WADE
 & MOERCHEN, INC.**

SWANSEA OFFICE
 4940 OLD COLLINSVILLE ROAD
 SWANSEA, ILLINOIS
 62226
 (618) 624-4488
 WWW.TWM-INC.COM

PROF. LICENSE	NUMBER
IL. PROF. DESIGN FIRM	184-011203
IL. PROF. ENGR. CORP.	62-053370
IL. PROF. STR. ENGR. CORP.	61-005203
IL. PROF. LAND SURV. CORP.	648-000023
MO. PROF. ENGR. CORP.	001528
MO. LAND SURVEYING CORP.	000348
TN. PROF. ENGR. FIRM	8274

SEAL

SIGNATURE:
 DATE SIGNED:
 LICENSE EXPIRATION:

ISSUED FOR REVIEW / BID
 09/04/2020

REV.	DATE	DESCRIPTION
△		
△		
△		
△		

DRAWN BY: DAB
 DESIGNED BY:
 CHECKED BY: MJM
 APPROVED BY:
 PROJECT NO: 00119032GA

PROJECT:
 AUFFENBERG AUTOMALL
 VILLAGE OF SHILOH
 ST. CLAIR COUNTY
 ILLINOIS

TITLE
 SITE PLAN
 SOUTH